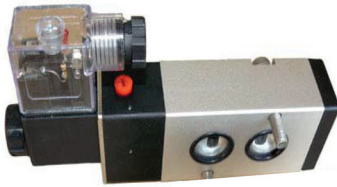


JJ08 SERIES NAMUR TYPE SOLENOID VALVE

ELECTROVÁLVULA NAMUR SERIE JJ08



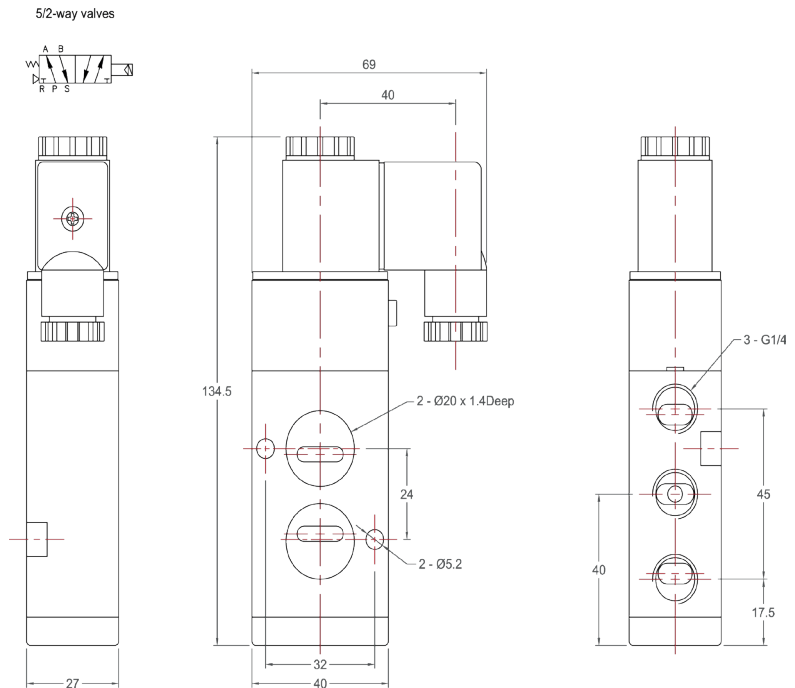
NAMUR ACCESSORIES / ACCESORIOS NAMUR



Silencer
Silenciador



Muffler
Regulador de escape



TECHNICAL DATA / DATOS TÉCNICOS

| | | | | | | |
|--|---|-------|-------|-------------------------|--------|--------|
| Tipo / Type | JJ08 | | | | | |
| Material / Material | Body: Anodized aluminium Cuerpo: Aluminio Anodizado | | | Seals NBR Juntas NBR | | |
| Coil Voltaje / Voltaje bobina | DC12V | DC24V | AC24V | DC110V | AC110V | AC220V |
| Action Type / Accionamiento | Internally pilot-actuated / Piloto actuado internamente | | | | | |
| Position No. / Posición N° | 5- Position 2- Way or (1) 3-position 2-Way 5/2 Vías - 3/2 vías | | | | | |
| Port size / Conexión | G 1/4" | | | | | |
| Connector / Conector | With Led / Con Led | | | - | | |
| Fluid / Fluido | Air | | | | | |
| Flow / Caudal | 700 L / Min | | | | | |
| Lubrication / Lubricación | Lubricated or not / Lubricado o no | | | | | |
| Operation Pressure / Presión de trabajo (Mpa) | 0.15 ~ 0.8 | | | | | |
| Temperature range / Temperatura | 5 ~ 60 °C | | | | | |
| Voltage range / Voltaje | ±10% | | | | | |
| Power consumption / Consumo | AC: 5.5VA DC: 4,8W | | | | | |